



Washing



Cutting



Laminating



Handling



Insulating



Software



Titan™

Elite Glass Washing System

The Titan glass washing system is intuitively designed to provide a premium level of performance. Leading-edge advancements in design coupled with original concepts, the Titan offers enhanced processing and simplified maintenance. The new low profile design improves area visibility and minimizes floor space required.

Configurable Zone Cleaning — allows ability to run four unique cleaning zones to maximize cleaning

Reformulated Roll Covering — reduces marking when processing sensitive coated glass

Enhanced Air Knife Design — improves throughput up to 40% over standard design

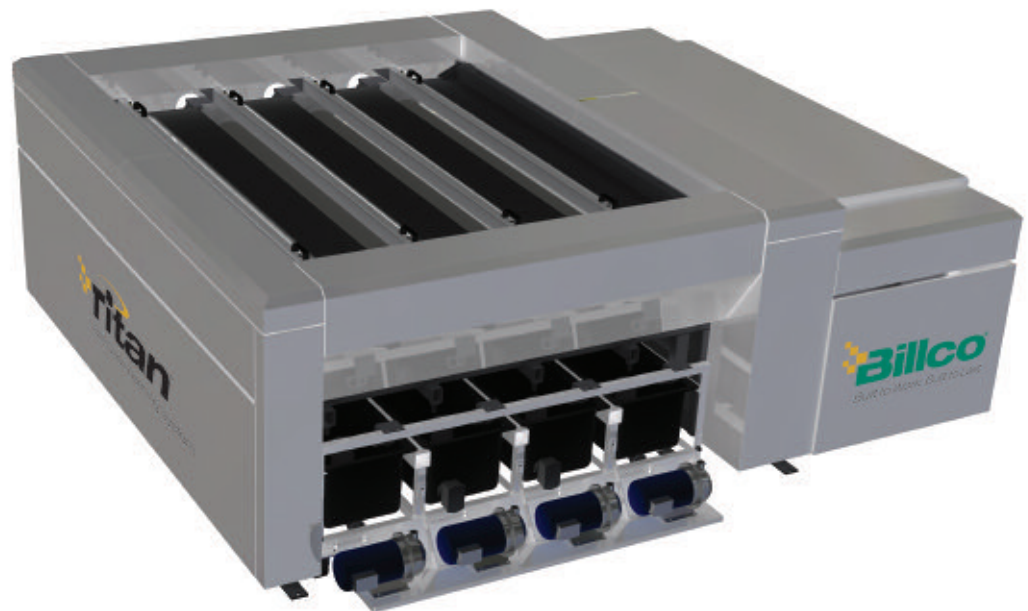
Stainless Steel Design — reduces the machines residual contaminants

Energy Efficient Components — minimize energy consumption for optimum return on investment

Screwjack Lift System — provides convenient access to interior components

Advanced Maintenance-Saving Features — reduce and simplify daily upkeep to maintain optimum performance

Conveyor Widths	Minimum Glass Size	Glass Thickness Range	Standard Operating Speed
48"	20"	0.250" w/o adjustment 0.750" w/ adjustment	Up to 50 ft./min.
60"	20"		Up to 50 ft./min.
72"	20"		Up to 50 ft./min.
84"	20"		Up to 50 ft./min.
96"	20"		Up to 50 ft./min.



KEY FEATURES

Advanced Maintenance-Saving Features



Energy Efficient Components



American Made



Customer Service



Simplified maintenance features make it more convenient to service the machine on a more regular basis, without significantly disrupting processing. This ensures the machine is well maintained to deliver optimum cleaning results.

ADVANCED MAINTENANCE-SAVING FEATURES:

- ❖ **Custom Molded Tank Design** — eliminates corners and associated build-up
- ❖ **Sloped Tank Bottom** — ensures tank empties completely
- ❖ **Individual Brush Motors** — reduce maintenance and improve part life
- ❖ **Roll Out Tank Frame** — promotes maintenance by providing easy access
- ❖ **Quik-Release Air Knife Design** — provides easy removal facilitating more frequent maintenance
- ❖ **Quick Change Roll Bearings** — simplify roll removal for replacement or cleaning
- ❖ **Maintenance-Friendly Baffling and Water Containment** — the cleaner the washer is, the better the washer cleans

OPTIONAL FEATURES AVAILABLE:

- ❖ **Concealed Blower Design**
- ❖ **Automatic Water Shutoff**
- ❖ **Re-circulating Rinse**
- ❖ **Static Elimination System***
- ❖ **Low-E Detection System***



Roll Out Tank Frame

Product shown without all required safety features.
Content subject to change.
*Available on separate conveyor.



Billco[®]
Built to Work. Built to Last.

Billco Manufacturing, Inc.
100 Halstead Blvd., Zelienople, PA 16063 USA
Phone: 724.452.7390 • Fax: 724.452.0217
sales@billco-mfg.com